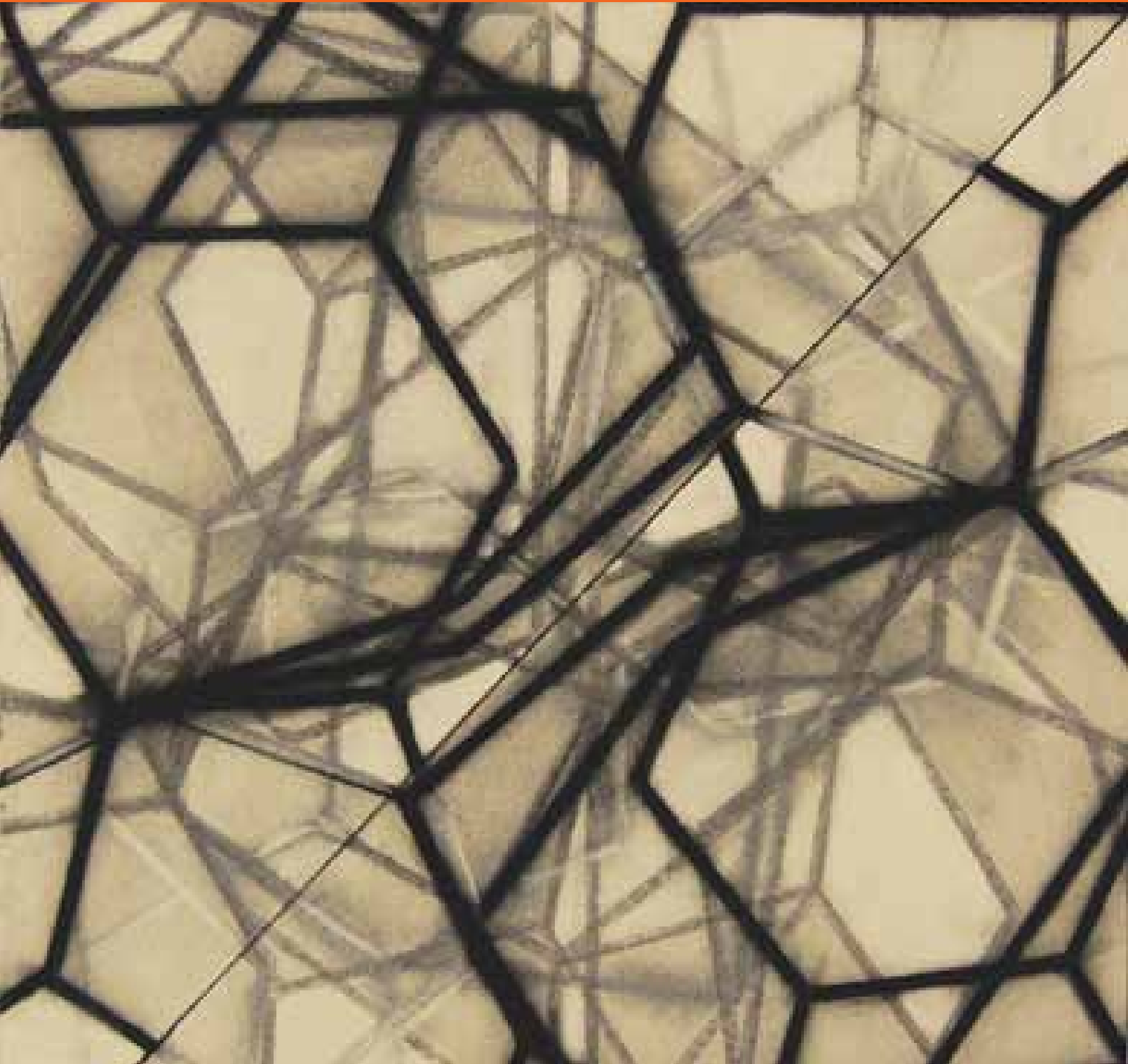


BENTLEY



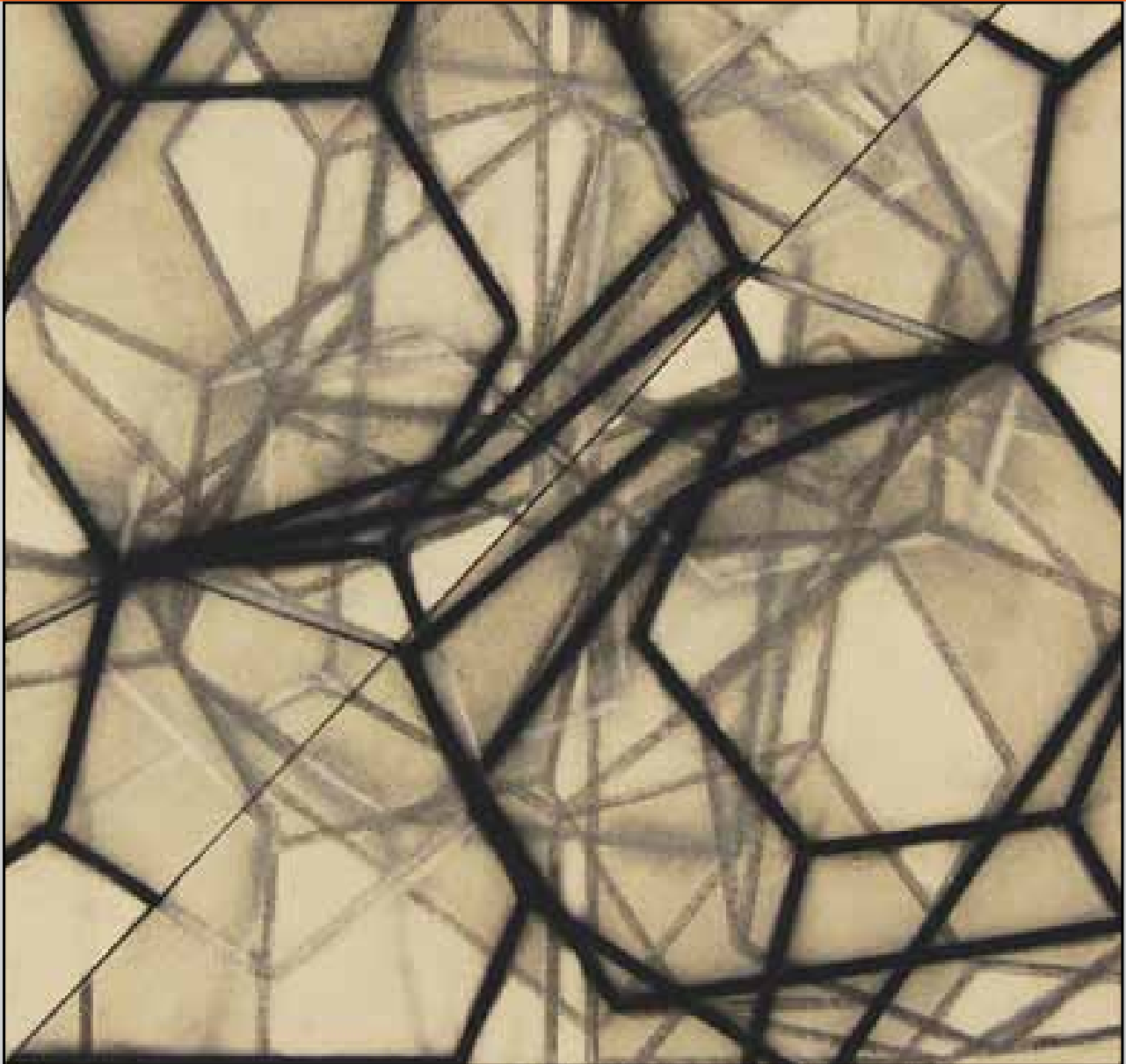


Pomilio

Mark Pomilio's current research has focused on creating images, which embody principles of geometry, fractals, cloning and single cell manipulation. These interests have led to invitations to lecture nationally, on topics as diverse as art and mathematics and the role the visual arts can play, in understanding the social ramifications of advances in the Life Sciences. His artwork has been featured in solo museum and gallery exhibitions nationally and internationally, including the Chapelle Saint-Louis de la Salapetriere, in Paris, France, Art Resources Transfer, in New York City and at the Robert V. Fullerton Art Museum in San Bernardino, CA. Mr. Pomilio is currently an Assistant Professor of Painting & Drawing, in the Herberger College of the Arts, at Arizona State University, in Tempe, Arizona. Prior to his recent move to the Phoenix area, Mr. Pomilio taught at Baylor University and The University of Michigan's, School of Art & Design. During his tenure at The University of Michigan, Mr. Pomilio completed over twelve public art projects, many of which are permanently installed throughout the University's Ann Arbor campus and neighboring communities. Mark Pomilio received his MFA from the University of Michigan, his BFA from the University of Pennsylvania and a four-year studio degree in Painting, from the Pennsylvania Academy of the Fine Arts.



BENTLEY



Cloned Cell Study II h 21 w 20" framed dimensions-h 30" w 29"d 1.75" charcoal on paper; framed (30"h x 29"w x 1.75"d) 2008

POMILIO

BENTLEY



Tree Drawing II h 86 w 30.5" charcoal on paper 2009

POMILIO

BENTLEY



Green with Envy h 64 w 54" framed dimensions-h 66" w 56" d 2" oil and pigment on canvas; framed (66" h x 56" w x 2" d) 2008

POMILIO

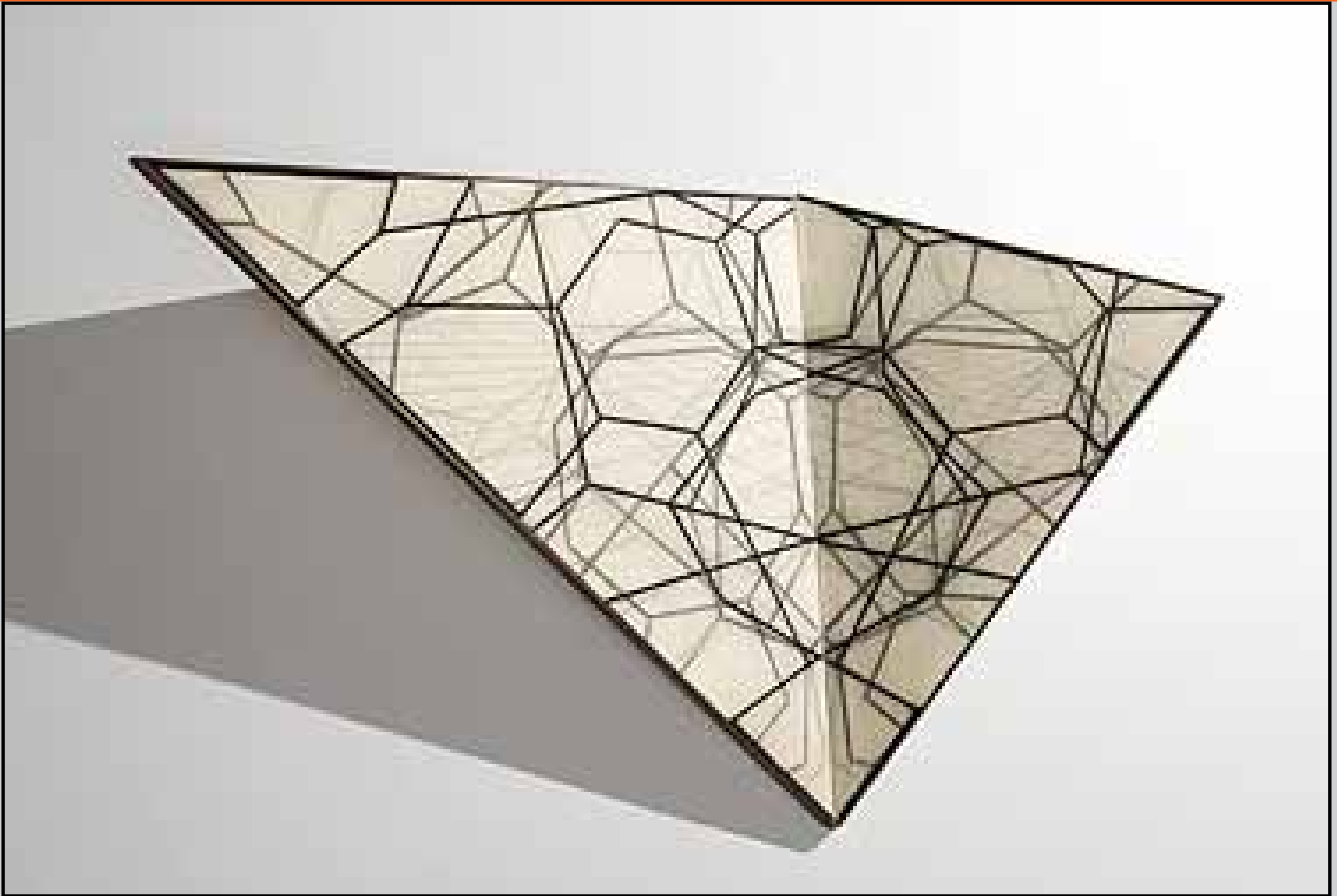
BENTLEY



AC (Bi-Fold) h 80 w 40" d 20" charcoal on paper, mounted to foam core and wood 2010

POMILIO

BENTLEY



Bi-Fold XI h 53.5 w 85.5" d 21" charcoal on paper, mounted to foam core and wood 2011

POMILIO